

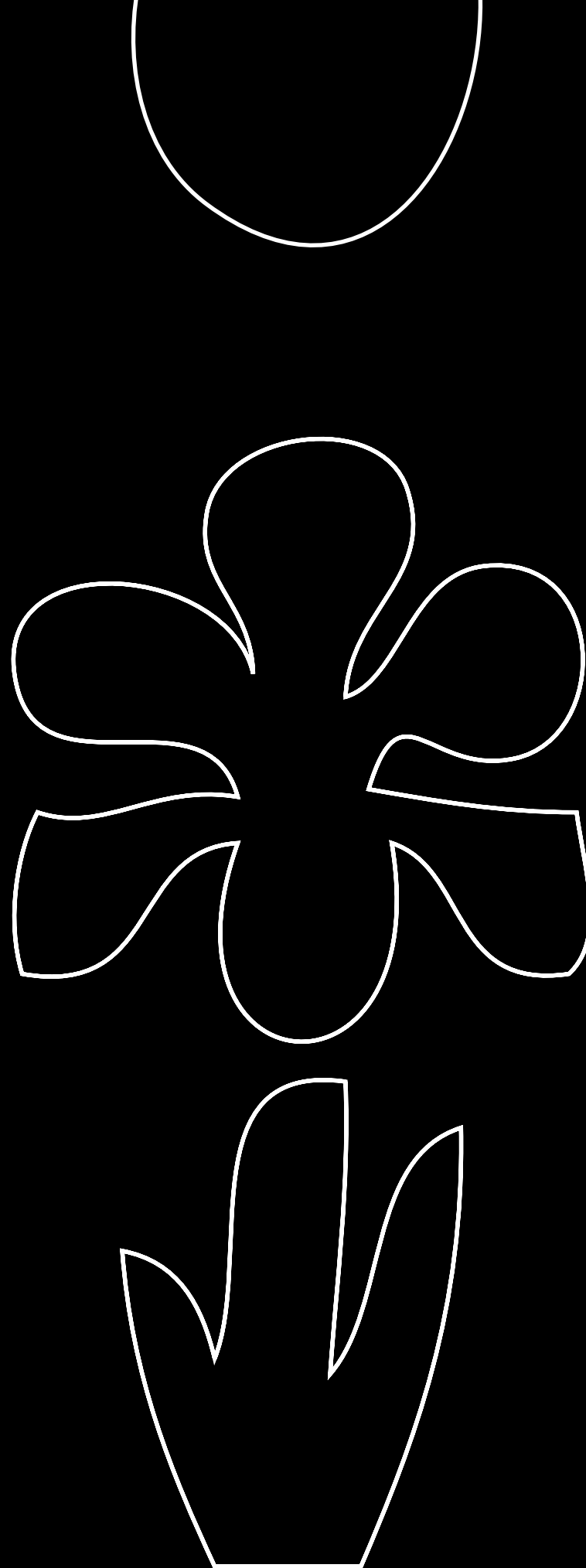
Iris U.S. Customer Service
800.323.9906
www.irisus.com



USIRISLG13



Made in the USA



Legno

Legno Collection

Full
Colored
Body

The colors on the surface of the tile are the same as the colors used in the body of the tile, making it ideal for high-traffic areas.

48"

8"

Legno Collection



Rectified



Legno Lavato

8 x 48
IRG0848116

6 x 24
IRG0624116



Legno Tinto

8 x 48
IRG0848117

6 x 24
IRG0624117



Legno Bruno

8 x 48
IRG0848118

6 x 24
IRG0624118



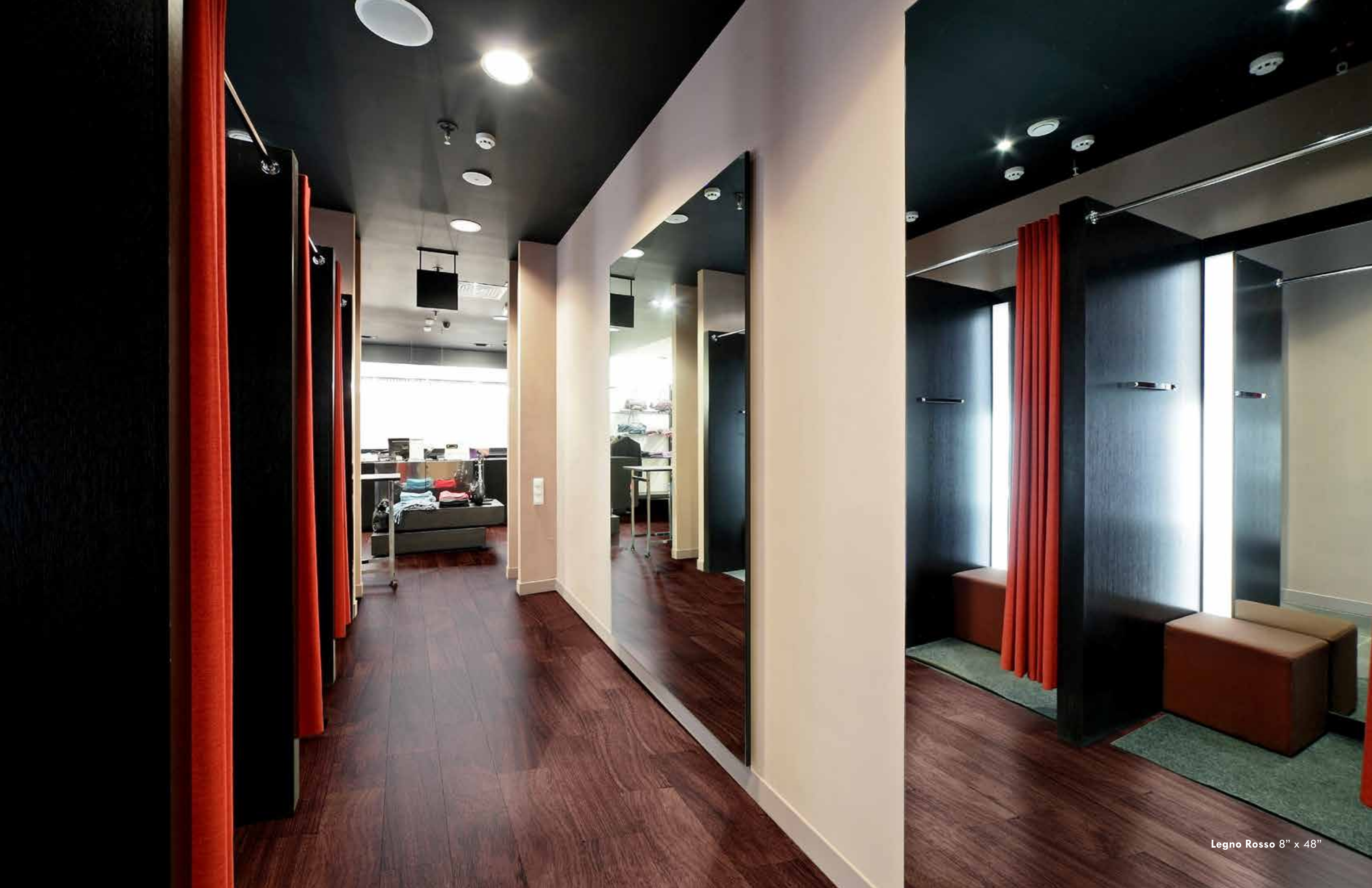
Legno Rosso

8 x 48
IRG0848119

6 x 24
IRG0624119



Legno Tinto 8" x 48"



Legno Trim



Bullnose
6 x 24
Honed

Legno Lavato	IRG624BT116
Legno Tinto	IRG624BT117
Legno Bruno	IRG624BT118
Legno Rosso	IRG624BT119



Tinto 6" x 24"



Lavato 6" x 24"



Legno Bruno 8" x 48"



Legno Bruno 6" x 24"



Legno Rosso 6" x 24"

C1028
COF

Dry ≥ 0.75

Wet ≥ 0.60

Acutest
COF

Wet ≥ 0.42

Legno Tech Specs

PHYSICAL PROPERTIES	TEST	INDUSTRY STANDARDS		IRIS US RESULTS COLORED BODY
Water Absorbtion	ASTM C373	0.5% Maximum		≤ 0.1%
Size				
Calibrated (non rectified)	ASTM C499	• Range of Thickness (inch)	0.040	≤ 0.040
	ASTM C499	• Average Facial Dimension	± 0.50%	≤ ± 0.50%
	ASTM C485	• Warpage	± 75% on any edge	≤ ± 0.75%
	ASTM C485	• Warpage	± 50% on diagonal	≤ ± 0.50%
	ASTM C502	• Wedging	± 0.50%	≤ ± 0.50%
Rectified	ASTM C499	• Range of Thickness (inch)	0.040	≤ 0.040
	ASTM C499	• Average Facial Dimension	± 0.25%	≤ 0.25%
	ASTM C485	• Warpage	± 0.40% on any edge	≤ 0.40%
	ASTM C485	• Warpage	± 0.40% on diagonal	≤ 0.40%
	ASTM C502	• Wedging	± 0.25%	≤ 0.25%
Bond Strength	ASTM C482	50 psi or greater		> 200 psi
Deep Abrasion	ASTM C1243	< 175 mm³		< 150 mm³
Hardness (Mohs scale)		No requirement		≥ 7
Frost Resistance (Freeze/Thaw)	ASTM C1026	No sample must show alterations to surface		No cracking or spalling occurred
Chemical Resistance	ASTM C650	No requirement		Class A
Breaking Strength	ASTM C648	250 lbf or greater		≥ 350 lbf
Coefficient of Friction (static)	ASTM C1028	No requirement		Per collection

Data taken from a representative colored body collection. Individual product testing can be conducted by request.

Coefficient of Friction: All values given are for matte or honed material. No values are given for polished material. Iris U.S. does not recommend polished surfaces in areas subject to exposure from grease, oil or water. (All values are based on ASTM C1028 and Acutest DCOF.)

Legno Packaging

PRODUCT	SIZE	BOX PIECES	BOX SF	PALLET BOXES	PALLET SF	THICKNESS	WEIGHT LB/SF
Floor & Wall Tile	8 x 48	6	15.585	32	498.72	8	3.55
	6 x 24	16	15.585	40	623.4	8	3.55
							LB PER PIECE
Bullnose	6 x 24	16	15.585	-	-	8	3.55