



MANUFACTURER

Iris U.S.

1360 S Vernon Street, Anaheim, CA 92805

Telephone: 800.323.9906

Fax: 866.398.4747

Web: www.irisus.com

1. PRODUCT NAME

Deluxe Collection



Perla



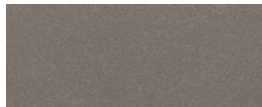
Delorian Grey



Crema



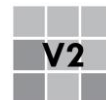
Ocean Storm



Absolute Black



2. PRODUCT DESCRIPTION



(Green Choice includes pre-consumer recycled materials and post-consumer recycled materials)

Iris US proudly contains factory and products certifications:



Size:

24" x 24" nominal

12" x 24" nominal

Thickness:

9 mm

Finishes:

Honed and Polished

Recommended Grout Joint: 3/32" or greater
All sizes modular with 3/16" grout joint (≈5 mm)

Grout joints of 1/8" inch or less, especially with larger format tiles or running bond patterns, may require floor flatness values in excess of the 1/4" in 10' (or 1/16" in 1.0') standard required by ANSI.

See ANSI A108.01 2.6.2.2

For patterns with running bond/brick joints patterns Iris US recommends a maximum of 33% offset.

See ANSI A108.02 section 4.3.8

3. TECHNICAL DATA

Physical Properties	ASTM Test	Industry Standards	Iris US Results
Water Absorption	C373	Impervious <0.5%	≤ 0.1%
Thickness Dimension	C499	Range ±0.04in Max.	≤ ±0.04 in
Facial Dimension	C499	±0.25%	≤ ±0.25%
Warpage Average	C485	± 0.40% on any edge	≤ ± 0.40%
Warpage Average	C485	± 0.40% on diagonal	≤ ± 0.40%
Wedging Average	C502	± 0.25%	≤ ± 0.25%
Bond Strength	C482	≥ 50 psi	≥ 200 psi
Breaking Strength	C648	≥ 250 lbf	≥ 400 lbf
Hardness (Mohs)	Scratch Test (No regulated)	Range 0 - 10	≥ 7
Visible Abrasion Resistance for Glaze Tile	C1027	No requirement Range 0 - 5	Class 4
Frost Resistance (Freeze/Thaw)	C1026	No sample must show alterations to surface	No evidence of damage
Chemical Resistance	C650	No Requirement Range E - A	Class A
Stain Resistance	C1378	No Requirement Range E - A	Class A*
Coefficient of Friction (Dynamic)	DCOF Acutest sm (wet)	≥ 0.42	≥ 0.42*
Aesthetic Classification	Visual Evaluation Shade & Texture	No Requirement Range V0 – V4	V2

* All values given are for matte or honed material. No values are given for polished material. Iris U.S. does not recommend polished surfaces in area subject to exposure from grease, oil or water.

For level interior spaces to be walked upon when wet (see ANSI A137.1 section 6.2.2.1.10 – Section 9.6 for test procedure).

4. INSTALLATION

All installation work using Iris US tiles will conform to the standards set forth in the latest version of ANSI A108/118 and/or the TCNA Handbook for Ceramic Tile installations.

Installation or setting materials:

Movement joints shall be provided throughout the tile and work will conform to ANSI Specification A108.01-3.7; A108.02 – 4.4. and TCNA Details EJ171.

Setting materials used will conform to the ANSI 118.4 standard or greater and be recommended by the selected manufacturer for the installation & setting materials for ceramic or porcelain tile based on the application requirements.

5. WARRANTY

Iris US guarantees that its products will be free of manufacturing defects and they will meet or exceed the performance specifications set forth in ANSI 137.1.

6. MAINTENANCE

Care and Maintenance Recommendations Guide

Please refer to **Iris US Care and Maintenance Recommendations Guide** for all technical information as to the care of this collection.

7. TECHNICAL SERVICES

Technical Assistance

Guide Specifications, literature, MSDS, tile samples, details and installation procedures are all available for your use or libraries.

Please contact your nearest Iris US representative for catalogues, physical samples, or architectural binders.